



## Envivio 4Manager

### Video Headend Management System

#### Targeting Mobile TV, IPTV, Internet TV and Broadcast Video Headends

As video services over broadband and mobile networks begin to converge with traditional broadcast services, Envivio draws upon its IP video expertise to offer a comprehensive video headend management system to address service availability and system administration. Specifically designed to work within the IP transport environment, Envivio® 4Manager™ is ideally suited to manage next generation video headends for mobile TV, IPTV and Internet TV in addition to traditional broadcast contribution and distribution networks.

4Manager offers a simple and comprehensive interface to control and monitor headend appliances and is compatible with over 1000 different devices, including encoders, video routers, satellite reception equipment and signal modulators and demodulators. 4Manager maximizes video headend availability and reliability by reporting system malfunctions and by offering advanced automatic 1+1 and N+M redundancy protection switching. It also includes configuration and firmware upgrade capabilities to simplify operational tasks.

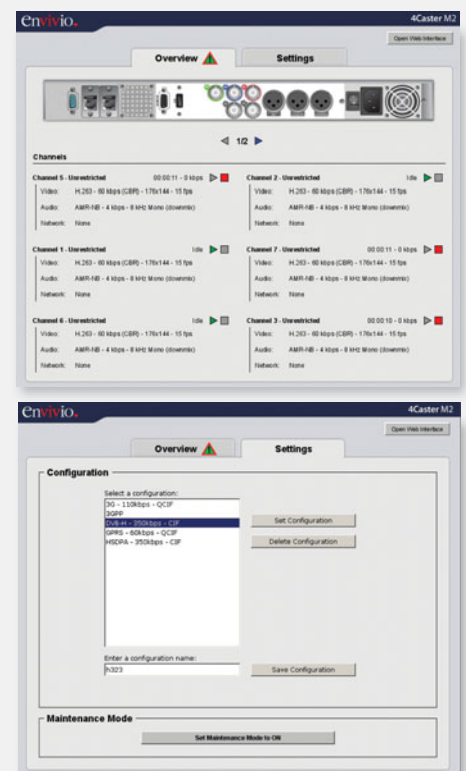
A robust management system with integrated redundant components and automatic headend configuration backup and restore tools, the 4Manager system can also automatically report the activities of both devices and individual operators. With such a comprehensive approach to monitoring and management, the 4Manager video headend management system enables broadcasters and network operators to reduce operational costs and ensures the highest quality of service (QOS) for their customers.

### Features

- Graphical and intuitive representation of each controlled device with continuous monitoring of device performance
- Service flow identification
- Video preview via the 4Manager client interface
- Interactive and graphical fault locator
- Automatic and manual 1+1 or N+M redundancy protection switching for IP, analog or digital video headends
- Switch-over mechanism based on alarm correlation and customizable parameters
- Automatic backup of video headend configuration for fast restore capabilities in case of failure
- Automatic reporting on system activity based on generic or custom criteria
- User profiles and privileges for secured administration of the system
- Standard interface supporting the addition of new device types to the existing library – more than 1000 device types
- Efficient 1 rack unit (RU) form factor

### Product Highlights

- Optimally designed for Envivio next generation IP video headends
- Simultaneously monitor and control all devices in both small and large architectures
- Intuitive input to output graphical user interface displays system topology, device panels and events
- Centralized control for modifying and upgrading device configuration
- Advanced redundancy mechanisms for reliable 24/7 service delivery
- Automatically tracks and reports individual operator activity and efficiency as well as system quality of service
- Standard interface supporting the addition of new device types to the existing library — more than 1000 device types





## Envivio 4Manager

### System Management Capabilities

#### System and Device Monitoring

- Service flow identification in the installed architecture
- Device performance continuous monitoring
- Automatic alarm reporting to user interface
- Event logger
- Automatic generation of reports on system activity based on generic or custom criteria
- Video preview of each encoder's output for visual stream monitoring
- Automatic backup of video headend configuration for fast restore capabilities in case of failure

#### System and Device Control

- Full device control and management by SNMP or SOAP
- Automatic and manual 1+1 or N+M redundancy protection switching.
- Alarm correlation performed to optimize redundancy mechanisms
- Centralized device firmware and configuration upgrade

#### 4Manager User Interface

- User profiles and privileges for secure administration of the system
- System browsing with tree architecture view
- Interactive and graphical fault locator
- Graphical and intuitive representation of each controlled device

#### Integrated Devices

Envivio Video Encoders:

- 4Caster B3
- 4Caster M2
- 4Caster M4
- 4Caster C4
- 4Caster HD3
- 4Caster 3500

Video routers and IP switches<sup>1</sup>

And compatible with more than 1000 other devices

#### Communication Protocols Supported

Connections:

- Ethernet (10/100/1000 BaseT)

Communication protocols:

- UDP, TCP/IP
- HTTP
- SNMP
- SOAP
- Telnet
- XML

### Hardware

#### System

1U rack IBM xSeries 336 Intel, Xeon 3.2 GHz/800 MHz, 2 MB L2 cache

Memory – 2.048 GB, hard disk drives in RAID 1 configuration

Ethernet – 2 x 10/100/1000

Dual power supply

#### Physical

Depth 27.0 in/686 mm

Height 1.7 in/43 mm

Weight 28 lbs/12.7 Kg

Width 17.3 in/440 mm

#### Electrical

100-240 VAC auto-ranging, 240 W maximum

Max Btu output: 647 Btu/hr

Noise level (horizontal position): 69 db (operating)

<sup>1</sup> Check IP Switch brand and model

### Operating Environment

Temperature: server on

10.0° to 35.0°C (50° to 95°F)

Temperature: server off

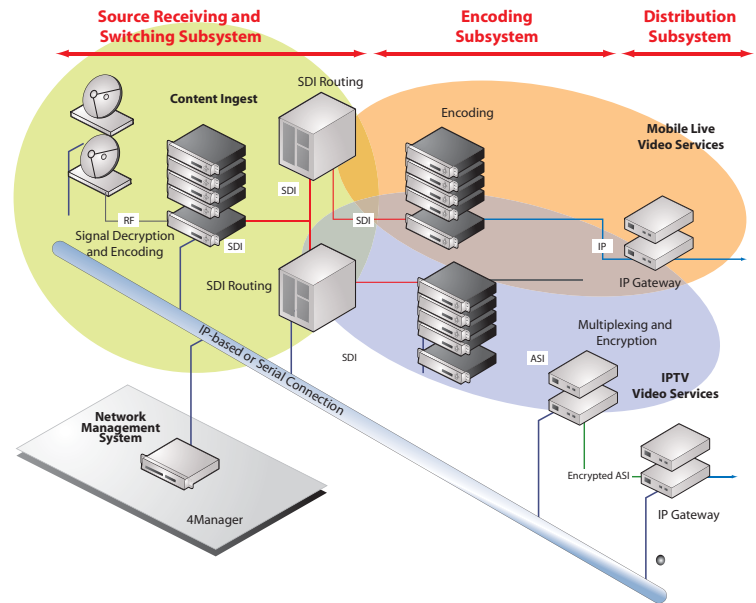
Non operating: 95% at 30°C (86° F) non-condensing

0° to 60°C (-32° to 140°F)

Temperature: shipment

40° to 60°C (-40° to 140°F)

### Video Headend Overview



For more information, visit:  
[www.realnworks.com](http://www.realnworks.com)



#### NORTH AMERICA

RealNetworks, Inc. — Corporate Headquarters  
NA Sales: 1-800-444-8011  
Sales & Support URL: <http://www.realnworks.com/support>

#### LATIN AMERICA & CARIBBEAN

Contact: Tony Roca  
Phone: 305-662-8435  
Email: [lamsales@real.com](mailto:lamsales@real.com)

#### NORTHERN EUROPE, BENELUX, SCANDINAVIA & MIDDLE EAST

Contact: Allen Dickson  
Phone: +44 203 051 9057  
Email: [allendickson@real.com](mailto:allendickson@real.com)

#### SOUTHERN EUROPE, EGYPT, NORTH AFRICA & SOUTH AFRICA

Contact: Filippo Arletti  
Phone: +39 348 5153715  
Email: [farletti@real.com](mailto:farletti@real.com)

#### CENTRAL & EASTERN EUROPE

Contact: Oliver Funke  
Phone: +49 2102 403914  
Email: [ofunke@real.com](mailto:ofunke@real.com)

#### FRANCE

Contact: Guillaume Gerard  
Phone: +33 1 53 43 90 65  
Email: [ggerard@real.com](mailto:ggerard@real.com)

#### JAPAN

RealNetworks, Inc. China  
Phone: +81 3 5371 9237  
Email: [japansales@real.com](mailto:japansales@real.com)

#### GREATER CHINA (BEIJING)

RealNetworks, Inc. China  
Contact: Echo Shen  
Phone: +86 10 8565 6466 ext. 328  
Email: [asiasales@real.com](mailto:asiasales@real.com)