



## RealProducer encodes high-quality RealAudio® and RealVideo® for streaming live or on-demand over the Internet and wireless networks.

---

As the encoding component of the [Helix Media Delivery Platform](#), RealProducer converts common audio and video files into high-quality streaming media for audiences from mobile wireless networks to broadband Internet connection speeds.

### Latest Feature Advancements in RealProducer

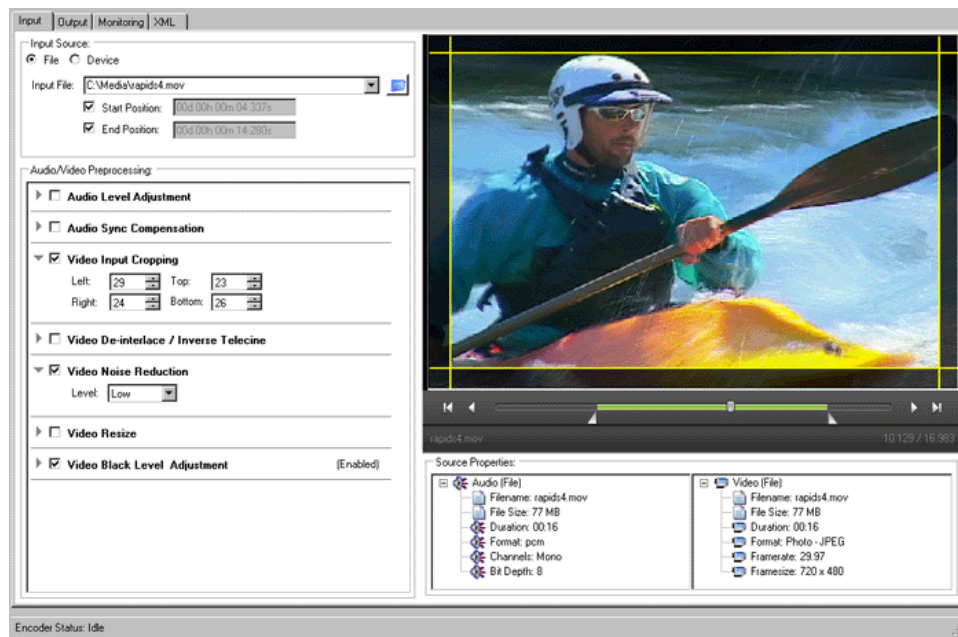
RealProducer architecture combines award-winning video quality with the interoperability, performance and reliability expected from RealNetworks. Encoding advancements include multiple output profiles, monitoring and support for features such as Live Rate Adaptation. RealProducer teams up with the Helix Server and Helix client technologies to form the definitive end-to-end solution for future-proof mobile video.

- **New Graphical User Interface**  
GUI has been completely redesigned in the latest version of RealProducer. The Interface displays both the source multimedia content and the encoded content side by side for comparison.
- **High Quality Encoding**  
Highly optimized RealAudio and RealVideo compression for both live and on-demand content, delivering the best video quality.
- **Multiple Input/Output Capacity**  
Enables high density encoding with multiple inputs and multiple output profiles per input, thus maximizing encoding capacity and throughput.
- **Setting Advisor**  
The GUI Settings Advisor provides automatic alerts of errors, warnings and informational conditions to help optimize encoding settings.
- **Audio/Video Signal Detection**  
A graphical audio/video preview plus watchdog reports for absent, noisy or frozen video and silent, clipped, imbalanced or out-of-phase source audio.
- **Timeline Editor**  
Use the timeline editor to set starting and ending points for the encoding job, thereby cutting unwanted video content at the beginning and end of the video clip.



# RealProducer

- **Live Rate Adaptation and Multi-Rate File Creation**  
Create multi-rate streams to improve overall end-user QoS by delivering the highest bit-rate possible supported by the network at any given time for both live and on-demand content.
- **Full Automation and Productivity Toolset**  
Fully automate the encoding process with the command-line interface and maximize productivity with XML job file templates.



New features in RealProducer include a new Graphical User Interface and Timeline Editor as shown here.

## Product Features

- Import job files from previous versions of RealProducer
- Professional-grade broadcasting platform: redundancy and forward error correction
- Broadcast content to multiple servers for ultimate scalability and redundancy
- Productivity: Job files and command line interface with batch encoding
- Encode in Constant Bit Rate or Variable Bit Rate for highest video quality
- Pre-filtering options: cropping, frame rate conversion, inverse-telecine, de-interlacing and noise filtering
- Metadata attributes, such as title, author, copyright
- Firewall traversal: broadcast to servers behind NAT firewalls
- Log Files: error messages saved to file for troubleshooting and analysis
- Log Viewer: displays log messages real-time during encoding sessions
- Highly reliable encoding with redundant output
- Automatic File Rollover: continues encoding when previous file reaches a specific size
- Automatically reconnects to Helix Server if the initial push connection is lost
- Multicast: conserves bandwidth while increasing redundancy and scalability
- Pull Broadcasting: allows servers to proactively connect to RealProducer
- Connectionless UDP Transport: reliable one way data transmission



## Technical Specifications

Input	Capture Card	Most capture cards that support Direct Show, VFW or WDM Osprey (100, 210/220, 230, 240e, 440, 450e, 500DV, 530, 540, 700e HD) Winnov (Videum Duo, Videum Quattro) USB and Firewire (IEEE 1394) based PC cameras
	File Format	AVI, MOV, DV, MP3, MPEG-4, WAV, MPEG-2* *MPEG-2 requires a separate Direct Show MPEG-2 reader, not included.
Output	Protocol	Helix (RBS) support for push, pull and multicast Multiple destination support (live or file)
	Audio/Video	RealAudio/RealVideo 8, 9, 10 Custom frame sizes up to 1920x1080

## System Requirements

OS	Windows XP, Windows Vista, Windows 7, Windows Server 2003, Windows Server 2008 A previous version of RealProducer is available for Linux; latest feature advancements not included
CPU	Pentium 4 or Core2Duo (recommended)
Memory	512 MB of RAM (minimum) 2 GB (recommended)
Video Card	A video card and display supporting 1024x768 or greater
Software	Direct X9.1 or later (to read .avi, .wav, and Windows Media files) (minimum) QuickTime 7 (to input .mov, .mp4, .3gp, and other filetypes) (recommended) DirectShow MPEG-2 Decoder (to input MPEG-2 files) (recommended)

## Contact Real Today

To learn more about the Helix Media Delivery Platform, please visit  
[www.realnetworks.com/HelixPlatform.aspx](http://www.realnetworks.com/HelixPlatform.aspx)

To contact a RealNetworks sales representative or authorized reseller in your area, please visit  
[www.realnetworks.com/contact/index.aspx](http://www.realnetworks.com/contact/index.aspx)